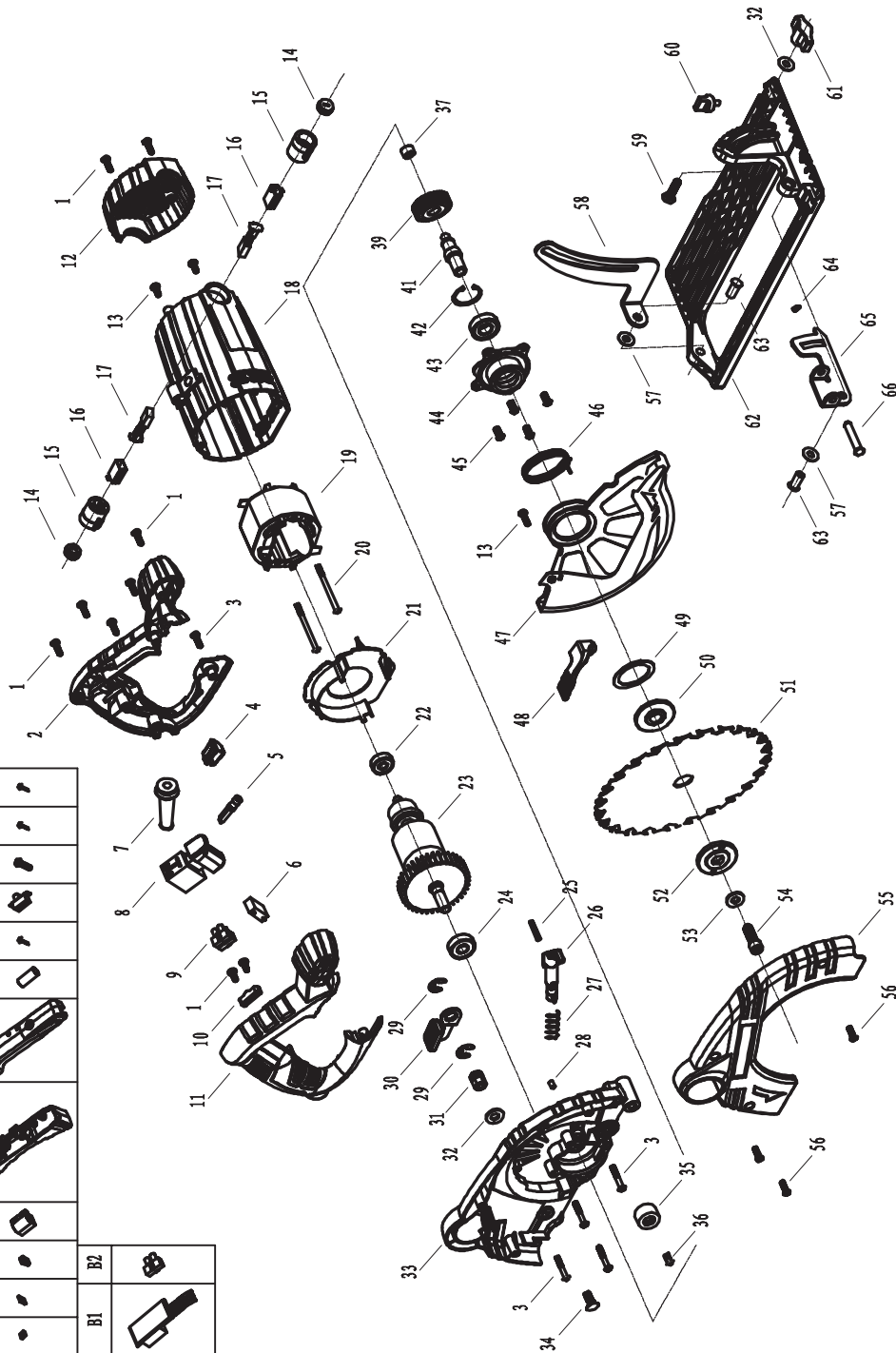


CIRCULAR SAW

NO.	DESCRIPTION	NO.	DESCRIPTION
1	TAPPING SCREW ST4X16	43	BEARING C&U 6001R
2	RIGHT HANDLE	44	BEARING BASE
3	TAPPING SCREW ST4X20	45	TAPPING SCREW M4X12
4	INDICATOR COVER	46	TORQUE SPRING
5	POWER INDICATOR	47	MOVABLE BLADE PROTECTOR
6	CAPACITOR 0.22[F	48	LEVER OF BLADE PROTECTOR
7	POWER CORD SLEEVE	49	COIL SPRING
8	SWITCH	50	INNER FLANGE
9	TERMINAL	51	SAW BLADE
10	CORD PRESSURE PLATE	52	OUTER FLANGE
11	LEFT HANDLE	53	WASHER
12	REAR COVER	54	HEXAGON BLOT M8X14
13	TAPPING SCREW ST4X8	55	RIGHT GEAR BOX
14	BRUSH CAP	56	PAN HEAD SCREW M5X12
15	BRUSH HOLDER	57	PAPER WASHER
16	CARBON BRUSHES	58	DEPTH BRACKET
17	BUSH	59	SCREW M6X22
18	HOUSING	60	SCREW FOR TIGHTEN PARALLE GUIDE M6X22
19	STATOR ASSEMBLY	61	KONB FOR ANGLE ADJUSTMENT
20	TAPPING SCREW ST4X65	62	BASE
21	WIND GUIDE	63	RIVET
22	BEARING C&U 608R	64	CIRCLIP FOR SHAFT 7
23	ROTOR ASSEMBLY	65	ANGLE BRACKET
24	BEARING C&U 6000R	66	PIN
25	ELASTIC CYLINDRICAL PIN 4X25	A1	NUT M3
26	SPINDLE LOCK	A2	NEGATIVE PLATE
27	SPRING OF SPINDLE LOCK	A3	NEGATIVE ELECTRODE
28	RUBBER COLUMN	A4	LASER BASE
29	OPENING RETAINER 9	A5	BATTERY BOX
30	DEPTH CLAMP	A6	COVER OF BATTERY BASE
31	NUT OF DEPTH CLAMP	A7	LASER
32	WASHER OF DEPTH CLAMP	A8	TAPPING SCREW ST3X10
33	LEFT GEAR BOX	A9	LASER SWITCH
34	BOLT OF DEPTH CLAMP	A10	TAPPING SCREW ST4X10
35	CHECK BACK CUSHION	A11	PAN HEAD SCREW M3X10
36	TAPPING SCREW M6X14	A12	TAPPING SCREW ST3X6
37	NEEDLE BEARING HK0808	B1	SOFT START PCB
39	GEAR	B2	TERMINAL
41	SPINDLE		
42	CIRCLIP FOR HOLE 28		



	A12	
	A11	
	A10	
	A9	
	A8	
	A7	
	A6	
	A5	
	A4	
	A3	
	A2	
	A1	
A	laser	
	B2	
	B1	
B	soft start	