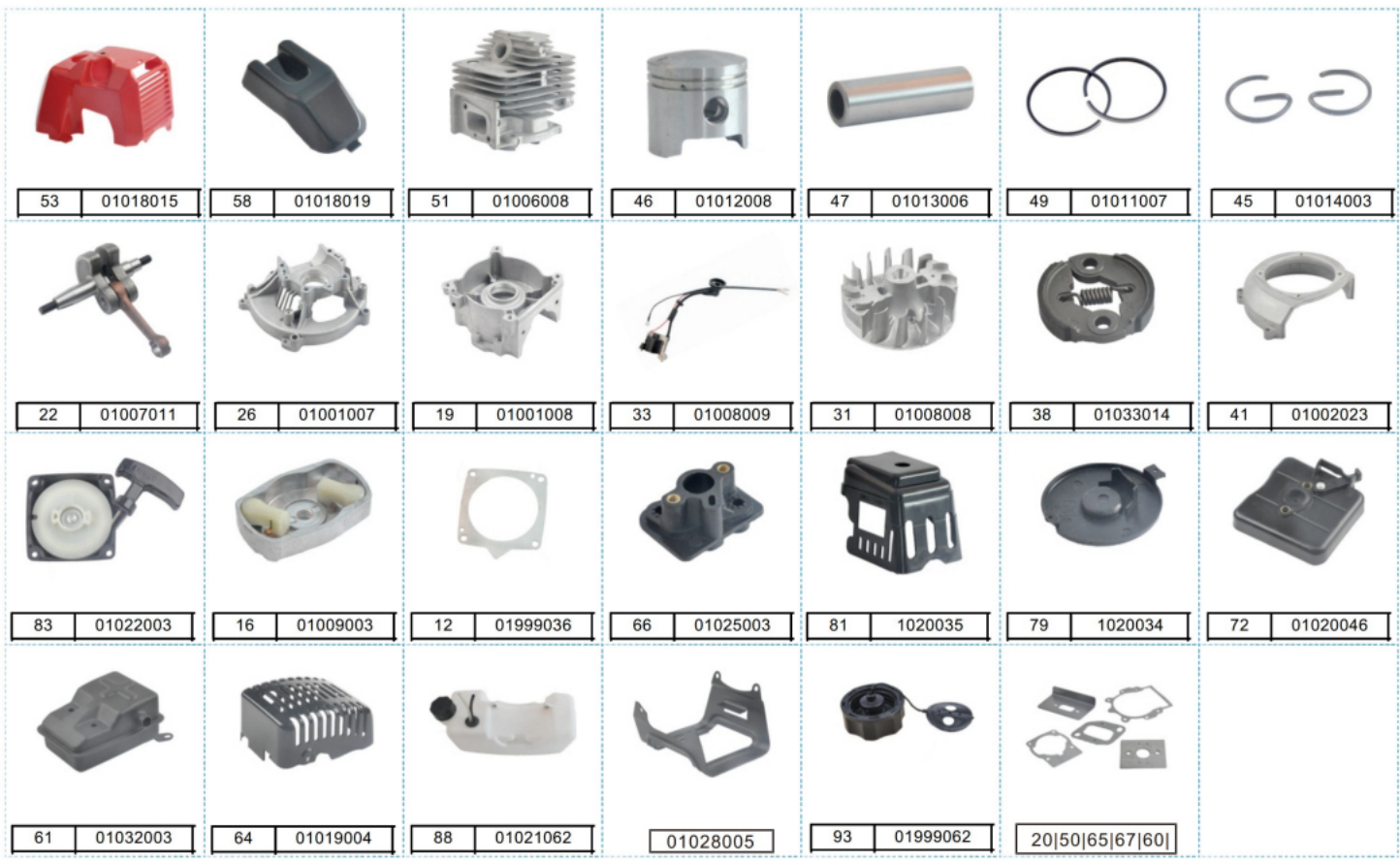
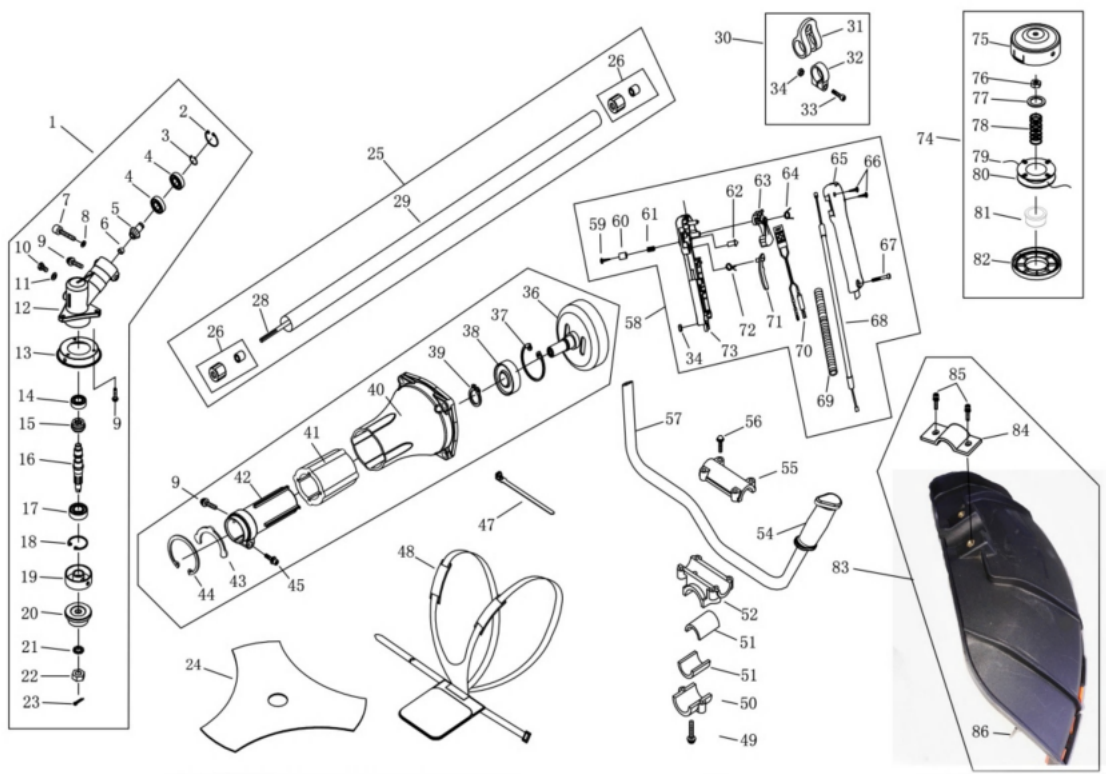


NO.	ERP NO.	PART MODEL	PART NAME	QTY.	NO.	ERP NO.	PART MODEL	PART NAME	QTY.
1	01111013	GB67	SCREW M5X12-9.8-DZ	1	50	01024019	1E40F-5-6	GASKET	1
2	01114012	1E40F-5.11-2	WASHER	1	51	01006008	1E44F-2A-1	CYLINDER	1
3	01022058	1E40F-5.11-1	START ROPE REEL	1	52	01103008	GB/T70.1	SCREW M5X20	2
4	01022059		ROPE	1	53	01018015	1E40F-5.5	GUIDE COVER ASS'Y	1
5	01022038	1E40FP-3Z.4-7	RECOIL SPRING	1	54	01016001	L6	SPARK PLUG	1
6	01022060	1E40F-5.11.1	START COVAR ASS'Y	1	55	01008049		SPRING	1
7	01022061	1E40FP-3Z.4-2	START HANDLE	1	56	01008066		PIUG CAP	1
8	01022062	1E40FP-3Z.4-10	RING	1	57	01008064		CAP	1
9	01103004	GB/T70.1	SCREW M5X25	6	58	01018019	1E40F-5-8	COVER	1
10	01999061	1E40F-5A-4	STAND	1	59	01008067	1E40F-5.3-1	PLUG	1
11	01999026	1E40F-5A-2	RUBBER COVER	1	60	01024020	1E40F-5-5	GASKET	1
12	01999036	1E40F-5-10	GASKET	1	61	01032003	1E40F-5	MUFFLER	1
13	01108005	GB/T6170	NUT M8	2	62	01110008	1E40F-5.2	BOLT	2
14	01022063	1E46FP.4-2	START CLAW	1	63		GB6177	NUT M6	2
15	01022064	1E36F.1.2-2	START SPRING	1	64	01019004	1E40F-5-7	MUFFLER COVER	1
16	01009003	1E40F-5.7-1	START REEL	1	65	01024022	1E40F-5-2	GASKET	1
17	01098013	GB896	STOP RING 4	1	66	01025003	1E40F-5A.2	ADMITTING PIPE	1
18	01017001	1E36F.2	OIL-SEAL	1	67	01024021	1E40F-5A-1	GASKET	1
19	01001008	1E40F-5.8-2	CRANK CASE	1	68	01015048	1E44F-2A.1	CARBURETOR	1
20	01024018	1E40F-5.8-4	GASKET	1	69	01109013	GB845	SCREW STZ,9X6.5	1
21	01113004	GB/T276	BEARING 6202/P4	2	70		GB97.1	WASHER.3	1
22	01007011	1E44F-2A.2.1	CRANK SHAFT	1	71	01020077	1E40F-5A.1.1-1	CHOKE HANDLE	1
23	01101001	GB1099	KEY 3X5X13	1	72	01020046	1E40F-5A.1.1.1	INSIDE COVER	1
24	01100004	GB119	PIN B5X12	2	73	01020078	1E40F-5A.1.1-2	CHOKE	1
26	01001007	1E40F-5.8-1	CRANK CASE	1	74	01020037	1E40F-5A.1.2	BAFFLE	1
28	01100002	GB119	PIN B4X10	2	75		GB97.1	WASHER 5	2
29	01017006	1E40F-5.9	OIL-SEAL	1	76	01103049	GB93	WASHER 5	2
30	01104014	GB9074.4	SCREW M5X30	4	77		GB/T70.1	SCREW M5X55	2
31	01008008	1E40F-5	NAGNETO ROTOR CONP	1	78	01020036	1E34F.1-1	FILTER NET	1



NO.	ERP NO.	PART MODEL	PART NAME	QTY.	NO.	ERP NO.	PART MODEL	PART NAME	QTY.
32	01108005	GB6177	NUT M8	1	79	1020034	1E40F-5A.1-2	INSIDE COVER	1
33	01008009	1E40F-5	IGNI TION COIL COMP	1	81	1020035	1E40F-5A.1-1	OUT SIDE COVER	1
34	01105002	GB9074.13	BOLT M5X20	2	82	01104007	GB9074.4	BOLT M5X16	4
35	01008070	1E40F-5.3.1	CORD COMP	1	83	01022003	1E40F-5.11	STARTER	1
36	01114005	1E36F-3	WASHER B	2	84	01021033	1E34F.9.2-3	CLEANER COVER	1
37	01033017	1E40F-5.6-1	SPRING	1	85	01021039	1E40F-5A.4.2-2	FUEL PIPE	1
38	01033014	1E40F-5.6.1	EXPANDER	1	86	01021032	1E36FF.8.1-1	PLUG	1
39	01114008	1E40F-5-11	WASHER	2	87	01021040	1E40F-5A.4.2-1	FUEL PIPE	1
40	01114001	1E40F-5-12	SCREW PIN	2	88	01021062	1E40F-5A.4.1	FUEL TANK	1
41	01002023	1E40F-5-9	FAN COVER	1	89	01021060	EB-415.4.1-1	FUEL TANK LID	1
42	01105004	GB9074.13	BOLT M5X25	6	90	01021059	EB-415.4.1.1-1	AIRSCOOP	1
44	01010008	1E44F-2A.2-3	BEARING	1	91	01021058	EB-415.4.1.1-2	GASKET	1
45	01014003	1E40F-03.02.01	PING	2	92	01021057	EB-415.4.1.1-3	STAND	1
46	01012008	1E44F-2A.2-1	PISTON	1	93	01999062	EB-415.4.1	LID ASS'Y	1
47	01013006	1E44F-2A.2-2	PISTON PIN	1	94		1E40F-5.10-1	OUTLET	1
48	01104006	GB9074.4	BOLT M5X12	2	95		1E40F-5.10-2	STOP RING	1
49	01011007	1E44F-2A.2-4	PISTON RING	2					



NO.	ERP NO.	PART NO.	PART NAME	QTY.	NO.	ERP NO.	PART NO.	PART NAME	QTY.
0	03049011	CG415.3	GEAR CASE ASS'Y	1	45	01103004	GB/T70.1	SCREW M5X25	1
2	01098001	GB/T893.2	STOP RING 26	1	47	01084002	BG415-1	WIRE CLAMP BAND	1
3	01098010	GB/T894.1	STOP RING 10	1	48	01092004	CG260A-CE.1	HARNESS ASS'Y	1
4	01113017	GB/T276	BEARING 6000-2RS/P5	2	49	01104017	GB/T9074.13	SCREW M6X25	2
5	01065005	CG415D.6-4	PINION	1	50	01053028	CG415D-2	CAP,LOWER	1
7	01103010	GB/T70.1	SCREW M6X20	5	51	01053051	CG330B-3	RUBBER WESHER	2
8	01106003	GB/T93	WASHER 6	5	52	01053030	CG415D-3	BRACKET	1
9	01104006	GB/T9074.4	SCREW M5X12	4	54	01072001		HANDLE RUBBER	1
10	01999047	GB/T29.2	BOLT M6X12	1	55	01053029	CG415D-1	CAP,UPPER	1
11	01107003	GB/T97.1	WASHER 6	5	56	01105004	GB/T9074.13	BOLT M5X25	4
12	01048016	BG305.12.4-4	GEAR CASE	1	57	01060001		HANDLE ASS'Y	1
14	01113009	GB/T276	BEARING 6000/P5	1	58	01075040		LEVER ASS'Y	1
15	01064003	BG-328.9.5-2	GEAR	1	59		GB/T846	SCREW ST2.9X13	1
16	01063001	CG305F.1-1	GEAR SHAFT	1	60		BL750.3-9	BUTTON	1
17	01113018	GB/T276	BEARING 6002-2RS/P5	1	61		BL750.3-7	SPRING	1
18	01098002	GB/T893.2	STOP RING 32	1	62		BL750.3-8	CLOCK PIN	1
19	01056002	BG305.12.4-5	HOLDER A	1	63		BL750.3-4	HANDGRIP	1
20	01057001	CG305F.1-3	HOLDER B	1	64		BL750.3-1	SPRING	1
21	01099002	GB/T862.1	WASHER 10	1	65		BL750.3-5	BOX,RIGHT	1
22	01108013	CG305F.1-4	LEFT NUT	1	66		GB/T845	SCREW ST2.9X18	2
23	01999046	GB/T91	PIN 2X16	1	67	01103002	GB/T70.1	SCREW M5X30	1
24	01090010	CG420-2	BLADE 255X25.4X1.6	1	68		CG260B-CE.1.1.1	CABLE COMP.	1
25		CG330B.1	PIPE COMP.	1	69		BG-328A-2	TUBE	1
26	01074007	BG-328.9.4-4,5	RUBBER COVER ASS'Y	6	70		CG328.2.1.1	STOP BUTTON COMP.	1
28	01067004		DRIVE SHAFT	1	71		BL750.3-3	HANDGRIP	1
29	01080035		PIPE Φ28X1.5X1437	1	72		BL750.3-2	SPRING	1
30	01069002	CG260.3	HOLDER ASS'Y	1	73		BL750.3-6	BOX,LEFT	1
31		CG260.3.1	HARNESS CLAMP	1	74	01091001	CG305F.8	NYLON CUTTER HEAD	1
32		CG260.3-1	CLAMP	1	75		CG305F.8.1	CASE	1
33	01102001	GB/T70.1	SCREW M5X20	2	76		CG305F.8-4	LEFT NUT A	1
34	01108004	GB/T889.1	NUT M5	2	77		CG305F.8-5	WASHER	1
35		CG415.2	CLUTCH COMP.	1	78		CG305F.8-3	SPRING	1
36	01055004	CG415D.1.1	CLUTCH DRUM COMP.	1	79			CORD Φ2.5MM	2
37	01098003	GB/T893.1	STOP RING 35	1	80		CG305F.8-1	CORD HOLDER	1
38	01113019	GB/T276	BEARING 6202-2RS/P5	1	81		CG305F.8-7	COVER	1
39	01098011	GB/T894.1	STOP RING 15	1	82		CG305F.8-2	COVER	1
40	01050022	CG420.2A-1	LINKER	1	83	01089025	CG420	PROTECTOR	1
41	01071002	CG328	RUBBER COVER	1	84	01089024	CG420	SAFETY GUARD BARCKET	1
42	01054009	CG420.2A-2	ALUMINIUM CONNECTOR	2	85	01103004	GB/T70.1	SCREW M5X25	2
43	01999045	CG420.2A-3	WASHER	1	86	01089027	CG330B-CE.2.1-2	BLADE	1
44	01098007	GB/T893.1	STOP RING 47	1					